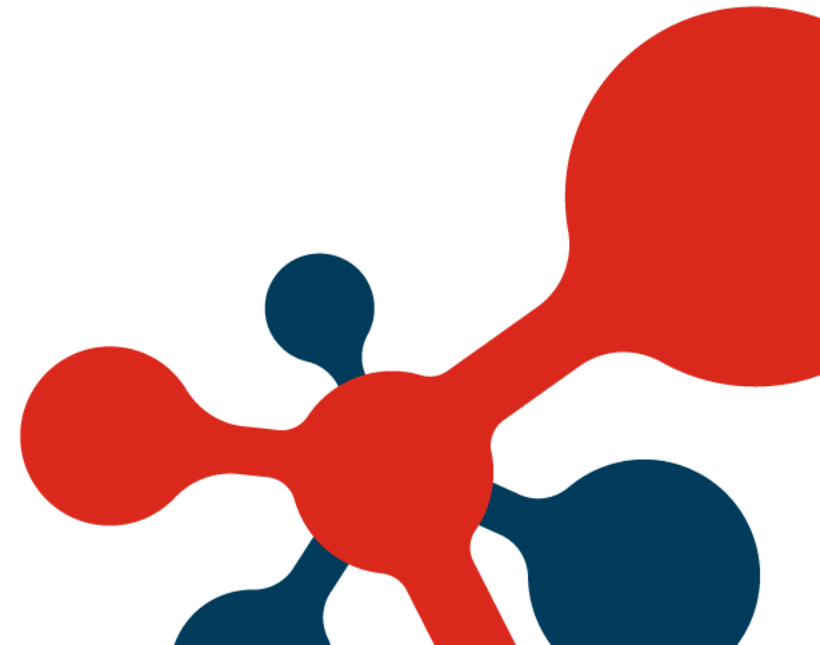


# STRENGTHENING CAPABILITIES FOR INTEGRATED CARE IN A “SUPER-AGED” SOCIETY

30th October 2023

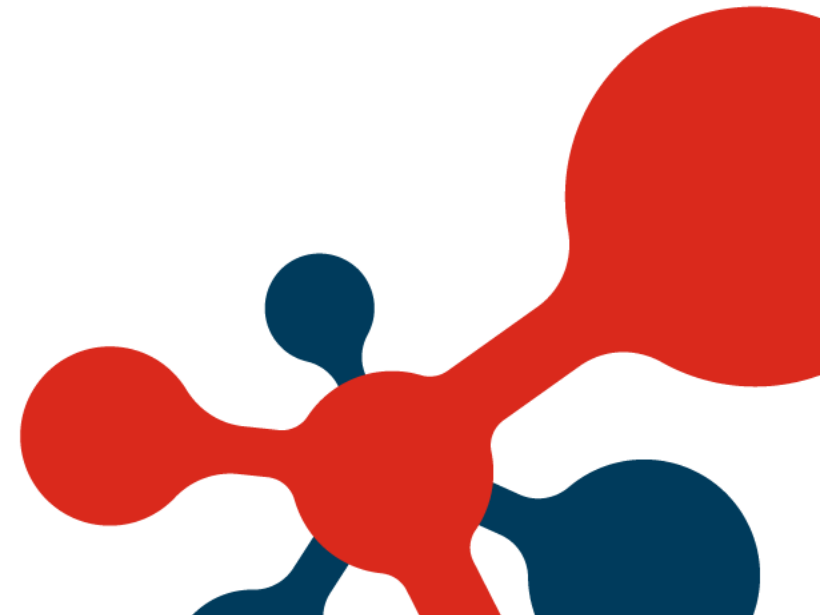


# “Fill in the Blanks”

PRESENTED BY

**MS JENNY TIEW**

ASSISTANT DIRECTOR, CARE@COMMUNITY,  
HEALTHCARE SUPPORT DEPARTMENTS  
FEI YUE COMMUNITY SERVICES



# Cloze Passage

**Fill in blanks with suitable word/words of your choice. [1 mark each]. Extra marks will be given for “excellent” answers.**

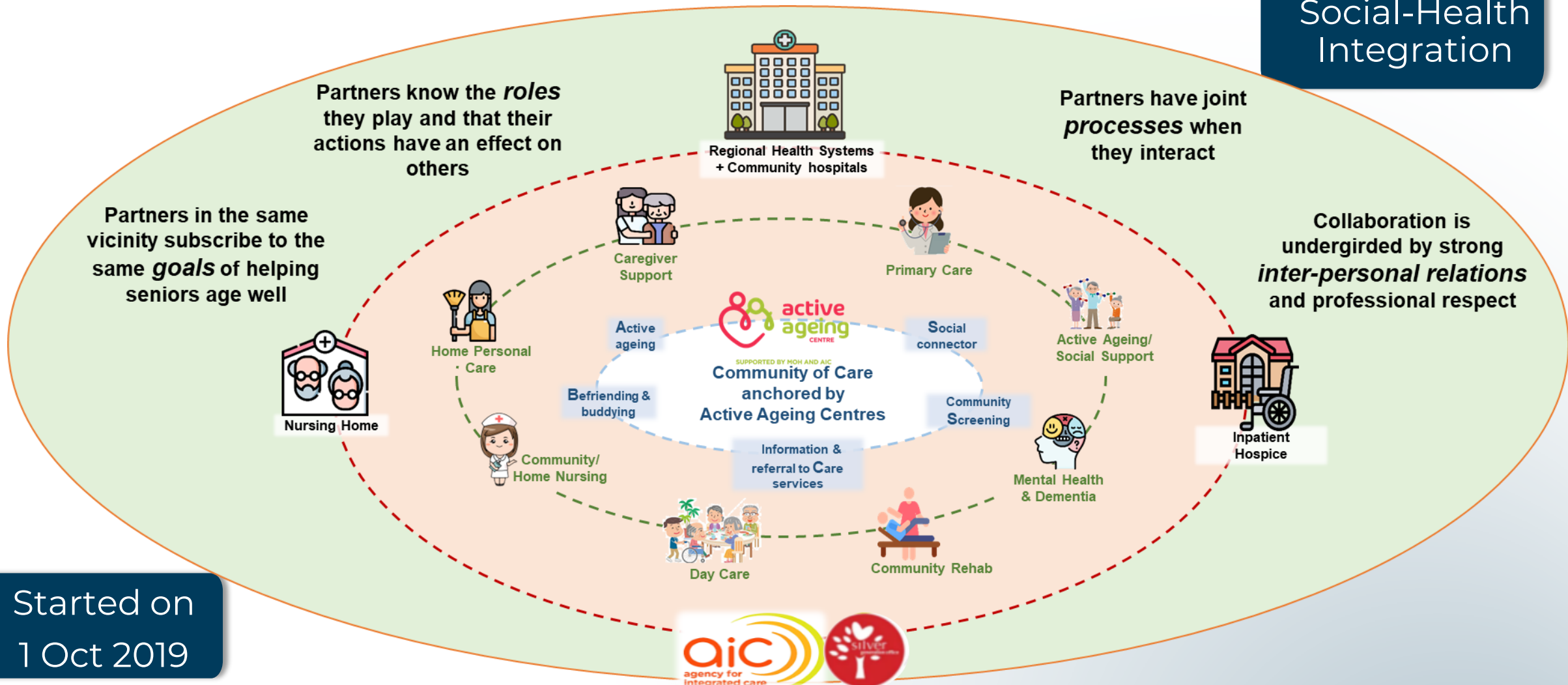
...The king and the queen were \_\_\_\_\_ . They had never dreamt that these two love birds will come together. So \_\_\_\_\_ and \_\_\_\_\_ married, and \_\_\_\_\_ live happily ever after.

# Active Ageing Centres (AAC)



# Communities of Care

Social-Health  
Integration



Started on  
1 Oct 2019



# Healthcare Services



(referrals e.g, community rehabilitation, charity foundation, milk supplements etc)



# Healthcare Services



Western Silvercare/Jin Jia Ho  
An Active Ageing Programme that  
includes  
WOW – Working out to Wellness  
CHP - Community Health Post



My Health Map  
Interdisciplinary Group meetings  
Mutual Alert System

**GPs in Bukit Batok**

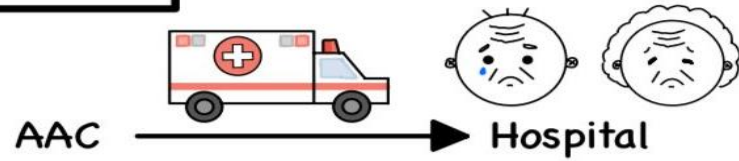
Primary Care Networks

# Story of Mr Tan



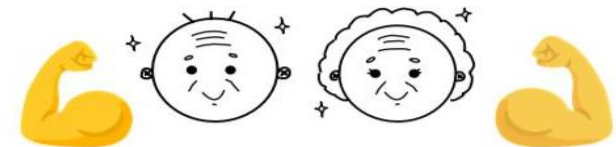
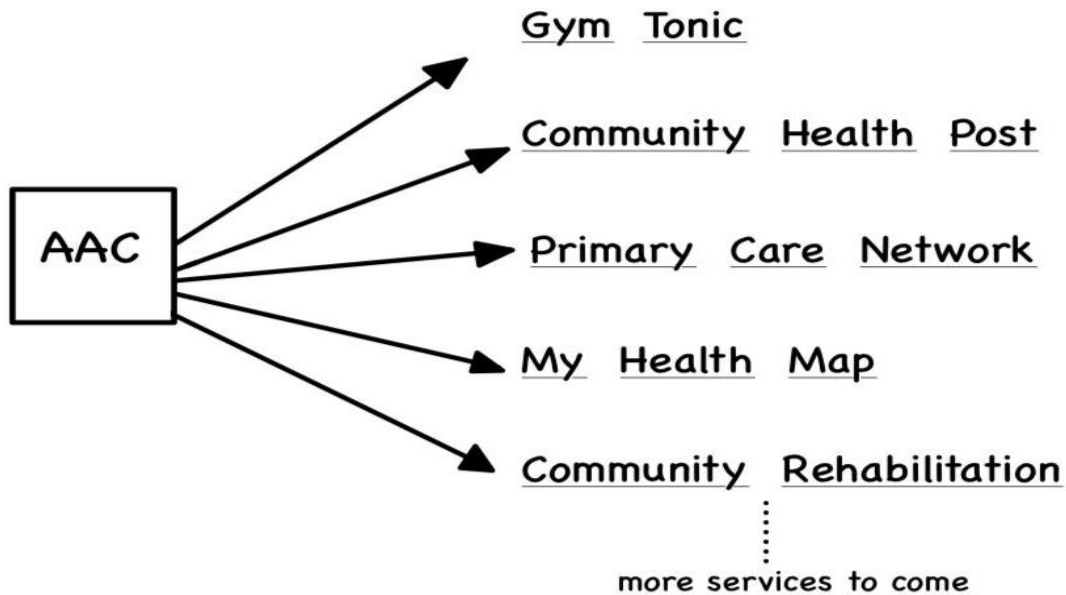


**Before**



**After Social-Health Integration**

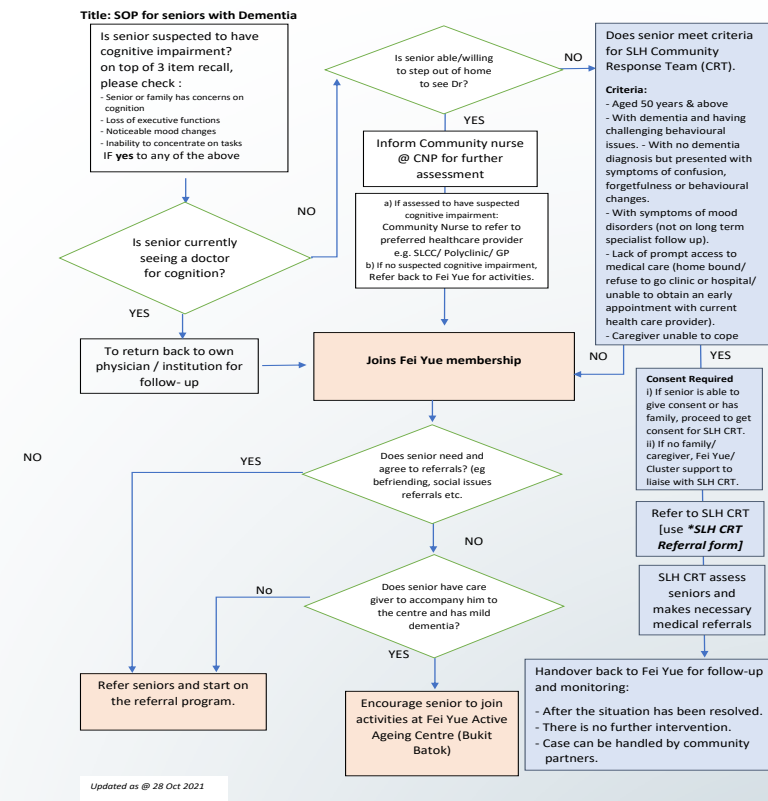
**Services/Facilities**



# Partnerships

Focus on building partnerships within Bukit Batok

- Joint Processes
- Strong Collaborations
- Aligned Goals



## Cloze Passage

Fill in blanks with suitable word/words of your choice. [1 mark each]. Extra marks will be given for “excellent” answers.

...The king and the queen were elated<sup>1</sup>. They had never dreamt that these two love birds will come together. So healthcare services<sup>2</sup> and social services<sup>2</sup> married, and seniors  
in the community<sup>4</sup> live happily ever after.

**THANK YOU!**

