

SMARTBUDDY

AN EDTECH AI STARTUP

With our passion and experience in Education-Technology, we offer a blended approach smart platform to help students maximise their potential in Education so that no students are left behind.

We do this by augmenting advanced Artificial Intelligence with human mentors to ensure individual students learn and progress at their own pace through Personalised Learning.

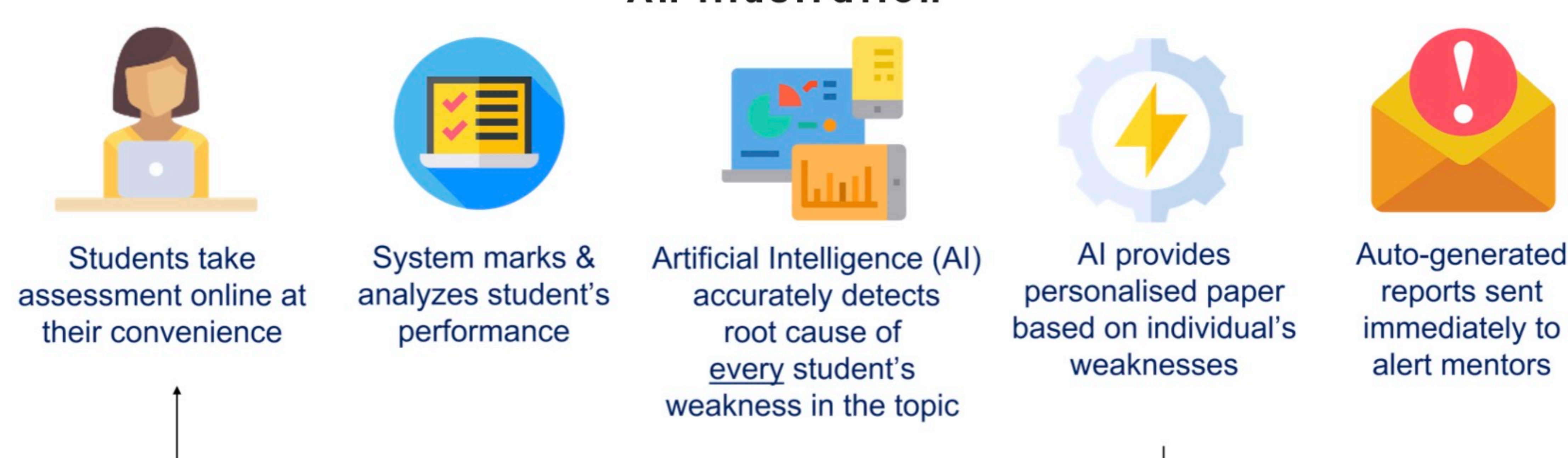
THE SYNERGY OF HUMAN & AI

Our system auto-marks online assessments and the AI engine analyses and detects root causes of every student's weaknesses and auto-generates individual diagnostics.

Human mentors then guide the students based on AI diagnostic reports that can detect influencing factors, which may be impossible for humans to pick up.

LEARN ANYTIME, ANYWHERE WITH SMARTBUDDY

An Illustration



Blended approach to help each student reach their fullest Mathematical capabilities

This human-AI blended approach helps each student reach their fullest potential as they are able to learn at their own pace and not feel discouraged, while seeking clarification from the mentors.

FOR TEACHERS

What SEP can provide for teachers



Ability to keep track of students' progress



Auto-Generated Question Papers

What teachers need to do



To submit a list of students for enrollment

Requires little effort from teachers

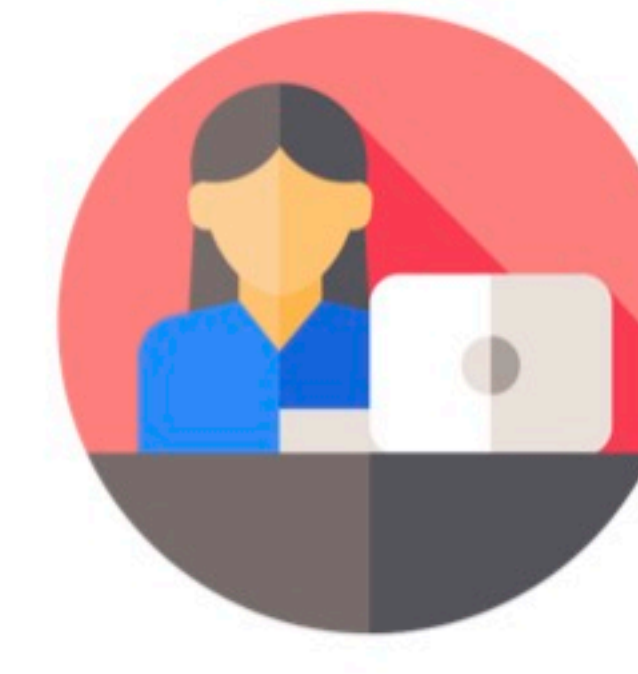
FOR STUDENTS

Personalized Assessments



Aligned to Students' Competency

Online Assessments



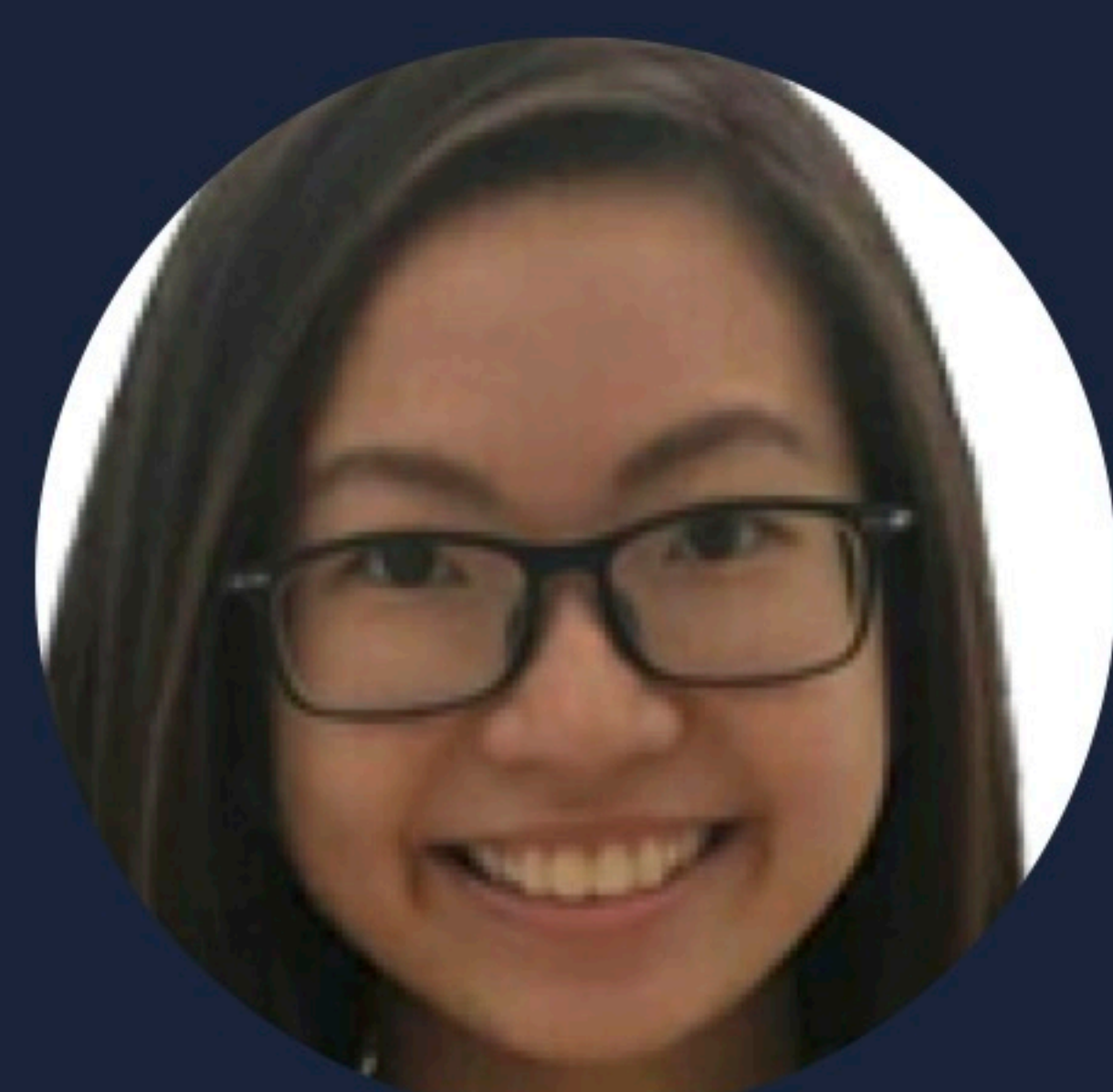
Motivates Students

Mentorship Program



No Students are Left Behind

THE CO-FOUNDERS



CYNTHIA CHIN

As an aspiring entrepreneur with over 4 years of marketing and business development experience, Cynthia has created - and successfully executed - business and marketing strategies for rapidly growing firms.



IRENE BOEY

Irene is a data strategist, educator and practitioner whom specializes in using Artificial Intelligence, Data Mining and Business Analytics to enable businesses to make intelligent decisions and make good sense of big data for over 25 years.